



Reach Within to Embrace Humanity

DISTRICT 5730 NEWSLETTER



July 2011 Volume 1 Issue Num. 1

DISTRICT GOVERNOR'S MESSAGE

Rotary Family,

Well.....it begins! And as we begin, I just want to say THANK YOU for the help each of you have provided in advance of Rotary Year 2011-2012. All the preparatory work is done and the real work of Rotary begins under the theme of Reach Within to Embrace Humanity. Thank you for being here and for helping Rotary bring about goodwill, peace, and understanding to our communities and around the world. I AM honored and blessed to know you and it is my pleasure and privilege to serve you.



At the end of our life we'll all find that whether we succeeded or failed, it took the same amount of time. What are you doing with your time? It is the most valuable resource. Earl Nightingale said it best when he said "Don't let the fear of the time it will take to accomplish something stand in the way of doing it. The time will pass anyway; we might just as well put that passing of time to the best possible use."

Not too long ago, I buried a friend. Nobody is sure how old Wynon was. The month and day she was born was shown on the funeral program but not the year. To her, age was a number and hers was unlisted. She was a great Rotarian, wife, mother, grandmother, great grandmother, cook, leader, volunteer, humorist, world traveler, humanitarian, and a friend whom I miss dearly.

To her family and those that knew her she would say, "Get up! Get busy! It's later than it's ever been before!" Think about that. It's later than it's ever been before. What are we waiting for? The right time?...Right circumstances?...Right amount of money?...Right place?...Permission?...?

The right time is now! The clock is now ticking! AND it's later than it's ever been before and there really IS such a thing as being too late.

We have so much to do and so many problems to solve in our communities and our world. Let's make it a great year! Let's make stuff happen. Let's do it different! It's our time and.....It's later than it's ever been before!!!!

David

WHAT'S INSIDE

Paul Harris 100% Clubs	Page 2
June Attendance Report	Page 3
2011 Cruise	Page 4
International Convention 2012	Page 5
Matter Of The Fact	Page 6
Quote Of The Month	Page 6
Polio Eradication Update	Page 7
Help The Rotary Foundation	Page 7
RI President's Message	Page 8
Trustee Chair's Message	Page 8
Historic Moments I	Page 9
Historic Moments II	Page 9



WHAT PAUL HARRIS SAID



"War cannot go on forever. Peace must and shall come. The years ahead reserve for Rotary a most difficult and arduous task. To heal the wounds of a war-ravished world; to substitute for hate, mutual understanding and tolerance; to create affection where rancor exists; to change enemies into friends and replace excited passion and armed struggle by goodwill and international peace."

Paul P Harris - 1942



2011-2012 Goal: all 51 Rotary District 5730 Clubs = 100% Paul Harris Fellow Membership!

Goal fulfilled! eight clubs = 100% Paul Harris Fellows, so far
 Goal pending! 43 clubs 100% Paul Harris Fellows, to go

www.Rotary.org/En/Contribute/DonorRecognition/IndividualRecognition/pages/paulharrisfellowrecognition.aspx

Contact.Center@Rotary.org or 866-9ROTARY (866-976-8279) or EREY@Rotary.org

Goal fulfilled! eight 100% Paul Harris Fellow clubs, so far! Congratulations to eight 100% Paul Harris Fellow Clubs in Rotary District 5730: Amarillo, Borger, Levelland/Noon, Midland/Daybreak, Midland/West, Greater Odessa, Plainview & Spearman.

To brainstorm about how your 100% PH Fellow club may systematically sustain its 100% Paul Harris Fellow status, please contact Alice.V.White@GMail.com or 806-785-2331. 100% Paul Harris Fellow club means that all, active, dues-paying members in a Rotary Club are cumulative \$1,000 PH donors (or are recipients of other PH donors' Foundation Recognition Points;* e.g., 1,000 FRPs to the credit of active, dues-paying members).

Goal Pending: 43 clubs 100% Paul Harris Fellow, to go!

Let's strategize together about how to maximize your Rotary Club's existing FRPs – on behalf of your club's sprint or marathon to 100% Paul Harris Fellow status: Alice.V.White@GMail.com or 806-785-2331.

Why might your Rotary Club aspire to sustain or become a 100% Paul Harris Fellow Club?

-- because your cumulative \$1,000 (or more) PH-eligible donations to The Rotary Foundation support a **wide range of humanitarian grants & educational programs** that enable Rotarians to **bring hope & promote international understanding throughout the world.**

Leverage, maximize & enjoy your Paul Harris donations through Foundation Recognition points/FRPs!

***What are FRPs?** -- to express **gratitude** to **generous** donors & to prime-the-pump for first-time **gifts & growth** through ongoing donations, the Rotary Foundation awards FRPs. Every Rotarian donor of **\$1K/Paul Harris Fellow-level, cumulative donation** ... receives an FRP for every cash/direct-contribution dollar donated to Rotary International Annual Programs, Polio Plus or approved Matching Grant contributions -- above her/his original \$1K donation (FRPs are not for available for contributions to Permanent Fund or RI programs). And when PH Fellows **share their FRPs with Rotary members who are not yet Paul Harris fellows**, everyone benefits:

1. the donor: assured that s/he has invested in meaningful Rotary projects, inspires first-time or additional donations from other Rotary members;
2. the FRP recipient: receives personal acknowledgement from a generous Rotary member & an energizing "jump start" toward becoming a Paul Harris fellow;
3. the Rotary Club aspiring to become 100% Paul Harris: strategically leveraging FRPs to achieve & sustain 100% PH Fellow status; &
4. our world via hope & international understanding through Rotary Foundation grants & programs.



MONTHLY CLUB ATTENDANCE REPORT FOR THE MONTH OF JUNE 2011

CLUB NAME	CLUB MEMBERSHIP	AVERAGE ATTENDANCE	NUMBER OF MEETINGS	NEW MEMBER(S)	NEW PAUL HARRIS FELLOW(S)
Amarillo	116	77	5	0	0
Amarillo East	31	70.59	4	0	0
Amarillo South	20	80	5	1	0
Amarillo West	63	72.22	4	0	0
Big Spring	61	45.7	4	0	0
Greater Big Spring	52	46	4	1	0
Borger	39	62	4	0	4
Canadian	29	79.31	4	0	0
Canyon	34	67.71	4	0	0
Childress	43	53	5	0	0
Colorado City	15	63	5	0	0
Denver City	13	55	5	0	0
Dimmitt	22	52	5	0	0
Dumas	28	57	5	0	0
Hereford	19	14	4	1	0
Kermit	21	61	4	0	0
Levelland	16	60	4	0	0
Levelland Noon	41	46	4	0	0
Lockney	14	75	4	0	0
Lubbock	151	55	3	1	0
Greater Southwest Lubbock	120	60	3	1	0
Metropolitan Lubbock	46	56	4	0	0
Midland	63	54.92	5	0	0
Midland Daybreak	10	40	5	0	0
Midland North	12	67	4	0	0
Midland West	50	57	4	1	1
Monahans	32	51	5	1	0
Muleshoe	40	48	4	0	0
Odessa	81	49	5	0	0
Odessa East	19	63	5	0	1
Greater Odessa	27	69	4	0	0
Pecos	33	42	4	1	0
Perryton	37	57	4	0	0
Plainview	72	41	4	0	0
Seagraves	7	71	4	0	0
Seminole	12	83	5	0	0
Shamrock	22	53	4	0	0
Spearman	22	60	4	0	0
Tahoka	30	50	5	0	0
Tulia	16	80	5	0	2



DISTRICT 5730

CALIFORNIA COASTAL CRUISE

OCTOBER 1 - 8, 2011



ROTARY INTERNATIONAL CONVENTION IN BANGKOK 2012

Register now for 2012 RI Convention in Bangkok, Thailand for an unforgettable experience in the Land of a Thousand Smiles! To attend the convention and experience the fellowship of Rotary at an international level :

- Check the preliminary schedule to help plan your trip.
- Register for the convention and ticketed events
- Reserve your hotel room online or by filling out the reservation form
- Reserve group housing
- Explore alternative housing opportunities
- Download pricing information
- Download visa forms
- Download the 2012 RI Convention promotional brochure (also available in Thai and Chinese .)
- Visit the Host Organization Committee's website for more information on host events
- Purchase host event tickets



Bangkok
ROTARY INTERNATIONAL THAILAND
CONVENTION 6-9 MAY 2012

Pre-register for the 2012 RI Convention by 1 December 2011 for the most economical pricing of 160 USD for most registrants. After 1 December the price will increase to 195 USD until 1 March 2012, when it will increase to the on-site price of 245 USD. After that register for the convention by submitting the downloadable registration form by 1 March or online via Member Access through 30 April.

Reserve your hotel room through Experient. Reservations are taken on a first-come, first-served basis, so please book early to secure your preferred hotel. Booking for RI Convention housing begins Saturday, 21 May 2011. Confirmations will be issued beginning in June.

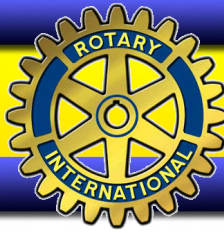
Contact Experient by e-mail, phone, fax, or online for the latest housing availability and other information. Return your completed reservation form to Experient by 17:00 Central Daylight Time 6 April 2012 . All housing changes and inquiries must be made directly with Experient by 17 April .

E-mail: rotary@experient-inc.com (for correspondence only)
Phone: 800-650-6913 (toll-free in North America) or 847-996-5885
Fax: 847-996-5401
Mail: Experient
568 Atrium Drive
Vernon Hills, IL 60061

Local Rotarians on the Host Organization Committee (HOC) have arranged several cultural excursions and host hospitality events to help visiting Rotarians enjoy their stay in Bangkok. Continue your convention experience by taking a host-sponsored tour before or after the convention. Some of these events have limited capacities, so be sure to purchase your tickets early.

Please note that you must register for the convention in order to purchase tickets for host events and tours.

Information: <http://www.rotary.org/en/Members/Events/Convention/Pages/ridefault.aspx?housead>



FACTS OF THE MATTER - INDIA

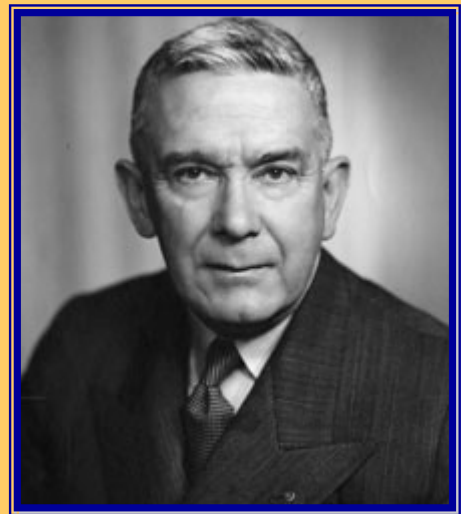


With a land mass about one-third the size of the United States, India is the seventh-largest country in the world. Its population of 1.2 billion – second only to China’s – accounts for more than 15 percent of the world’s population, on 2.4 percent of the world’s land. The country’s median age is 26. Three in 10 Indians are 14 years old or younger.

- About 81 percent of Indians are Hindus, 13.4 percent Muslims, 2.3 percent Christians, and 1.9 percent Sikhs. The Indian government recognizes more than a dozen official languages. About 41 percent of the population speaks Hindi. English is widely spoken throughout the country.
- India’s annual per capita income of US\$3,400 ranks 163rd among the world’s countries. Twenty-five percent of the population lives below the poverty line, but India has the second-largest labor force – 478 million people. About 52 percent of Indians work in agriculture, which accounts for 16 percent of the country’s gross domestic product. About one-third of the people work in service industries, which account for 55 percent of GDP. Fourteen percent work in industry, which represents 29 percent of GDP.
- India is the world’s largest producer of tea and milk. It also exports computer software to 90 countries.
- On the UNESCO World Heritage List of 911 sites of “outstanding universal value,” India has 23 noteworthy for their cultural heritage and five for their natural heritage.
- The Taj Mahal, regarded as one of the most beautiful structures in the world, is located on the banks of the Yamuna River in the city of Agra in the northern state of Uttar Pradesh. Mughal emperor Shah Jahan built it in memory of his wife Mumtaz Mahal, who died in childbirth in 1631. The main white marble building is a mausoleum containing their tombs. It is estimated to have taken 17 to 22 years to construct.

- The city of Mumbai is the center of India’s commercial film industry, known as Bollywood – a combination of Bombay (Mumbai’s former name) and Hollywood. Bollywood produces an average of 1,000 movies a year, about twice as many as Hollywood.
- To many people around the world, Mohandas K. Gandhi, the leader of the Indian national movement against British rule, is known by the name Mahatma. This is an honorific title that translates as “great soul” in the ancient Indian language of Sanskrit.
- India has 3,048 Rotary clubs with a total of 113,339 members, as of 31 March. Indian Rotarians have contributed more than \$7.1 million to Rotary’s US\$200 Million Challenge to eradicate polio.

ROTARY QUOTE OF THE MONTH



YOUTH’S GREAT POSSIBILITIES

"The youth of every generation has stood in a critical position, for the scales have been tipped one way or the other by the training they received from their elders. This is particularly true today. Our boys and girls have greater freedom, exercise greater power, and have more opportunities for both good and evil, than ever before. How important it is, therefore, that youth’s great possibilities for good be realized and developed!"

Angus S. Mitchell
1948-49 RI President



POLIO ERADICATION JULY UPDATE

Week Ending 07/17/11

As long as polio threatens even one child anywhere in the world, children everywhere remain at risk. The stakes are that high.

	TO DATE 2011	TO DATE 2010	Total 2010
Total Cases Globally	267	501	1349
in endemic countries:	89	66	232
in non-endemic countries:	178	435	1117

New Polio Cases Reported in July

India 0, Nigeria 2, Pakistan 1, Afghanistan 2, DRC 2, Chad 4, Cote d'Ivoire 3, Burkina Faso 1

2011 Polio Case Breakdown by Country:

(GREEN NUMBERS ARE 2010 TOTALS)

Endemic Countries:

1 India (42), 19 Nigeria (21), 59 Pakistan (144), 10 Afghanistan (25)

Importation Countries:

4 Angola (33), 89 Chad (26), 63 DRC (100), 4 Mali (4), 0 Mauritania (5), 0 Nepal (6), 0 Kazakhstan (1), 1 Niger (2), 0 Russian Federation (14), 0 Senegal (18), 0 Sierra Leone (1), 0 Tajikistan (458), 0 Turkmenistan (3), 0 Uganda (4), 1 Congo (384), 1 Gabon (0), 2 Burkina Faso (0), 14 Cote d'Ivoire (0), 1 Guinea (0), 0 Liberia (2)

PolioPlus: Rotary's permanent gift to the children of the world.

\$177 Mil Now Raised to Meet the \$200Mil Challenge



HELP THE ROTARY FOUNDATION MAKE A LASTING DIFFERENCE

During a trip to Niger on a Rotary Foundation grant, Ernie and Sally Montagne of Arizona, USA, saw firsthand how the Foundation's humanitarian efforts are helping to break the cycle of hunger and poverty.

"The Rotary Foundation is our vehicle of choice to enable ordinary Rotarians to make a lasting difference in the lives of thousands of villagers in Africa," says Ernie.

Contributions to the Annual Programs Fund through the Every Rotarian, Every Year (EREY) initiative are the primary source of funding for Foundation programs, including those that helped support efforts in Niger. These programs cover more than 160 countries and geographical areas on seven continents. (Contribute now.)

Here is a small sample of projects made possible through EREY:

- In the aftermath of Hurricane Mitch, Rotary clubs helped create Nueva Esperanza, (New Hope), a sustainable community in Honduras for poor families devastated by the storm. Using a Health, Hunger and Humanity (3-H) Grant, Rotary clubs in Honduras and California, USA, provided books, computers, and medical equipment for Nueva Esperanza, helping families put their lives back together.
- With the help of a Rotary Foundation District Simplified Grant, the Rotary Club of West Jacksonville, Florida, USA, built a baseball field designed for local children with disabilities. The unique turf allows players using wheelchairs, walkers, and crutches to easily maneuver across the field with the help of an on-field "buddy" -- a volunteer, parent, or friend. (See this story in a clip from RVM: The Rotarian Video Magazine, volume 4, issue 1.)
- A 3-H grant sponsored by the Rotary clubs of Calcutta Metropolitan, West Bengal, India, and Medicine Hat, Alberta, Canada, helped establish a half-mile concrete walkway in Nabapally, India, that serves as an escape route for villagers during annual monsoons.



Your contribution to Every Rotarian, Every Year makes humanitarian projects possible.



THE RI PRESIDENT'S MONTHLY MESSAGE

My dear brothers and sisters in Rotary!

All of us in Rotary are looking to change the world – why else would we be Rotarians? We believe that our world can be happier, healthier, and more peaceful, and that we can create that better world through our service.

In 2011-12, I will ask Rotarians to Reach Within to Embrace Humanity. I will ask you to search first within yourselves, to understand that all of us, everywhere, have the same dreams, the same hopes, the same aspirations, and similar dilemmas. When we understand, and truly feel, that others' needs are the same as our own, we begin to understand how important our work is. In the year ahead, we will have three emphases in our Rotary service.

Our first emphasis in this Rotary year will be the family. The family and the home are at the core of all our work – all our service begins here. And through the family, we approach all of our community and indeed, all of humanity, as an extended family, in which all members care for each other. In times of joy and in times of need, no one is ever alone.

Our second emphasis will be continuity – finding the things we do well and taking them to the next level. We must build on our successes, expand on them, and strive to do even more. Of course, our greatest obligation is to PolioPlus, where success is now so close.

And our third emphasis will be change. We must understand that true change can only begin with each of us, and start within us. We cannot share peace with others if we do not have it to give. We cannot look after the whole world without first looking after those closest to us: our families, our clubs, and our communities.

Mohandas K. Gandhi said, "You must be the change you wish to see in the world." In Rotary, we endeavor to live ethically and honestly, to share friendship and fellowship, to see equal worth in every human being. We are not interested in the lowest common denominator, for Rotary is anything but common. Instead, we work to elevate ourselves, elevate others, and thereby embrace the world.

Together, we will Reach Within to Embrace Humanity. And in peace, harmony, and friendship, we will bring change – and a more joyful world.

Kalyan Banerjee

THE TRUSTEE CHAIR'S MONTHLY MESSAGE

Let's work together to make 2011-12 a great year

I am excited, and I hope you are too, as we move into the new Rotary year. Our clubs and districts have new leaders, and we've set new goals for the year ahead. Everything we appreciate in Rotary remains constant, but the people and roles change.

Similarly, our Rotary Foundation has new trustees and a new chair, but our mission remains the same: to enable Rotarians to advance world peace through the improvement of health, support of education, and alleviation of poverty. This year, we've set three goals for the Foundation – not to replace our vision for the future, but to give us focus for the year.

Our first goal is to complete the eradication of polio. We took great steps forward in 2010. We cannot relax, however, as the outbreaks in Tajikistan and the Republic of the Congo remind us. Each of us can make a contribution to this, the greatest achievement in the history of Rotary.

Our second goal is that every one of us should feel that we own The Rotary Foundation. We can do that through our service and our contributions. This should be our Rotary Foundation.

The third goal is to make our Foundation more effective and efficient by testing and refining our Future Vision Plan. After a very positive first year, we need the pilot districts to tell us what works and what could be improved, and to develop new ways to serve. This also will be a preparation year for nonpilot districts. Think now how your district structure will change and how you will make decisions on grants and audits.

The strength of The Rotary Foundation, our Foundation, is not determined by the trustees. What we can do is determined by you. Please support us, and together let us make 2011-12 another great Rotary year.

Bill Boyd



HISTORIC MOMENTS I



WHY THE ROTARY YEAR BEGINS ON JULY 1ST

Ever wonder why the Rotary year begins 1 July? The international convention initially played a key role in determining the start date of our fiscal and administrative year.

Rotary's first fiscal year began the day after the first convention ended, on 18

August 1910. The 1911-12 fiscal year also related to the convention, beginning with the first day of the 1911 convention on 21 August.

At its August 1912 meeting, the Board of Directors ordered an audit of the International Association of Rotary Clubs' finances. The auditors recommended that the organization end its fiscal year on 30 June to give the secretary and treasurer time to prepare a financial statement for the convention and board, and determine the proper number of club delegates to the convention.

The executive committee concurred, and at its April 1913 meeting, designated 30 June as the end of the fiscal year. This also allowed for changes to the schedule for reporting club membership and payments. Even *The Rotarian* changed its volume numbering system to correspond to the fiscal year (beginning with vol. 5, July 1914).

Rotary continued to hold its annual conventions in July or August until 1917. Delegates to the 1916 event in Cincinnati, Ohio, USA, approved a resolution to hold future conventions in June, mainly because of the heat in cities where most of them occurred. The next one was held 17-21 June in Atlanta, Georgia.

The term "Rotary year" has been used to signify Rotary's annual administrative period since at least 1913. An article in *The Rotarian* that July noted, "The Rotary year that is rapidly drawing to a close has been signalized by several highly successful joint meetings of Clubs that are so situated as to assemble together easily and conveniently."

Since the executive committee's decision in 1913, the end of the Rotary year has remained 30 June.

HISTORIC MOMENTS II



ROTARY'S FIRST GENERAL SECRETARY

When John Hewko takes office on 1 July, he will be the 12th person to serve as Rotary's general secretary.

The first was Chesley Reynolds Perry, a Spanish-American War veteran and former Chicago Public Library employee.

In August 1910, the newly formed National Association of Rotary Clubs unanimously selected Perry for the role, then known as secretary. He accepted the part-time position at \$100 per month, with an agreement that the amount of time he would devote would remain unspecified.

By 1912, the job had evolved into a full-time executive role, and the Board of Directors agreed to increase Perry's salary.

His office on LaSalle Street in Chicago served as the first headquarters of the National Association. In 1911, Rotary established an office in the First National Bank Building at Dearborn and Monroe streets. The headquarters would move five more times during Perry's term -- always into rented facilities.

Perry served in the position longer than any of his successors. He also served as editor and business manager of *The Rotarian* from 1911 to 1928, and he opened Rotary's first international office, in Zurich, in February 1925. During his final year in office in 1941-42, the position's title was changed to general secretary.

In 1940, when Perry announced his plans to retire, he agreed to remain in his post while the organization trained his replacement, Philip C. Lovejoy. A number of clubs sought to nominate Perry for RI president in 1942-43, but he declined, saying, "I am gratefully conscious of the high compliment thereby being paid to me."

After retiring, Perry remained a member of the Rotary Club of Chicago, and served as its president in 1944-45. In 1954, Rotary offered him the title "secretary emeritus" to honor his years of service, but he again declined, preferring the role of ordinary Rotarian.

Perry died on 21 February 1960 at the age of 87.